

Precise. Consistent. Innovative.



Aerospace

Rotor Blade, Engine, Exhaust & eVTOL Products

As a leader in **deep-drawn**, **electroformed** and **spun** components and assemblies, Alpha Metalcraft Group (AMG) manufacturing sites have extensive experience delivering highly precise and complex products for the aerospace, defense and x-ray imaging markets.

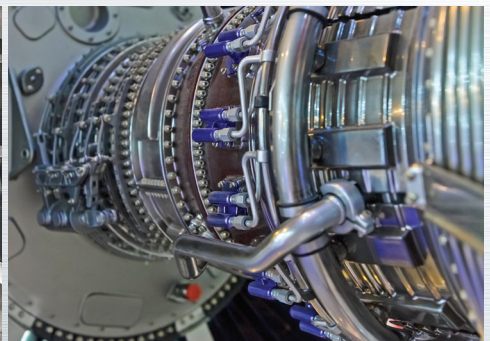
Our customers rely on us for aerospace engine and exhaust components, rotor blade and missile components, and x-ray tube components and housing assemblies. Leveraging the expertise of our several manufacturing sites, AMG helps customers navigate their most difficult manufacturing challenges and knows how to deliver products that meet their stringent requirements.



Rotorcraft & eVTOL Blades
Leading-Edge Guard Products



Turbine Engines
Guide Vane Abrasion Guard Products & Ducting Products



SCAN TO
LEARN MORE

AlphaMetalcraft.com



Aerospace Products

Certifications

- AS9100D
- ISO9001:2015
- NADCAP
- ITAR

Cage Codes

- 3EAF1 (Bethel)
- 9ZNS7 (Danbury)
- 29453 (Commack)
- 4RRZ1 (Pacoima)

Materials

- Alloy 718, 625
- Hastelloy
- Nickel
- Nickel/cobalt
- Copper
- Stainless steel
- Aluminum
- Kovar
- Molybdenum
- Titanium
- Tantalum

Products

Deep Drawn & Spun Products

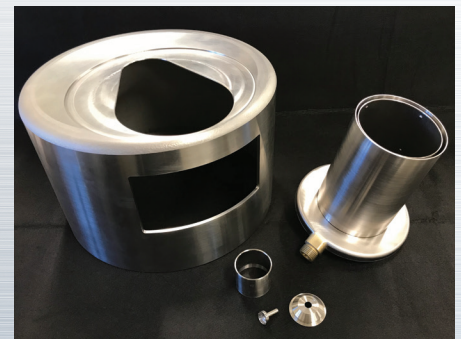
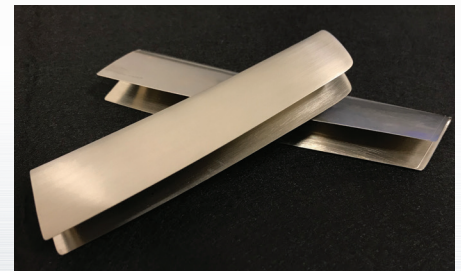
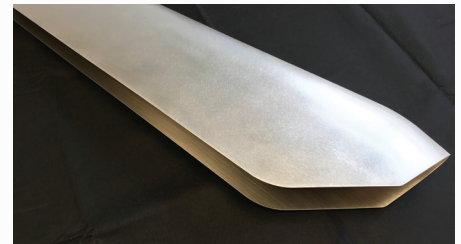
- High-pressure/high temperature duct system products
- Microturbine, missile, UAV and munition products
- Fire suppression products

Electroformed Products

- Leading edge abrasion guards
- Cold shields
- Heat shields
- Wing slot seals
- OG Vane leading edge abrasion guards

Equipment & Processes

- Deep draw forming
- Electroforming
- Spinforming
- Laser cutting
- CNC machining
- Grinding
- Polishing
- Welding
- Assembly
- 150+ forming presses
- 5 to 600 tons
- Electroforming tanks up to 18'
- Electroforms up to 2,000 lbs.



SCAN TO
LEARN MORE

AlphaMetalcraft.com

