

# *Precise. Consistent. Innovative.*

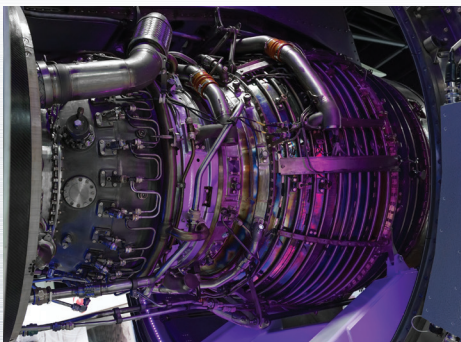


## *Defense*

### Rotor Blade, Turbine Engine, Exhaust & Missile Components

As a leader in **deep-drawn** and **electroformed** components and assemblies, Alpha Metalcraft Group (AMG) companies have extensive experience delivering highly precise and complex products for the aerospace, defense and medical markets.

Our customers rely on us for aerospace engine and exhaust components, rotor blade and missile components, and x-ray tube components and housing assemblies. Leveraging the expertise of Connecticut Coining, Gasser and GAR Electroforming, AMG helps customers navigate their most difficult manufacturing challenges and knows how to deliver products that meet their stringent requirements.



**Turbine Engine**  
Exhaust Duct Components



**Rotorcraft Blade & Turbine Engine**  
Abrasion Guards



**Missile**  
Body Skins, Nose Cones &  
Wing Slot Seals (heat shields)



SCAN TO  
LEARN MORE

*AlphaMetalcraft.com*





# Defense Products

## Certifications

- AS9100D
- ISO9001:2015
- NADCAP
- ITAR

## Cage Codes

- 29453
- 3EAF1
- 26014

## Materials

- Alloy 718, 625
- Hastelloy
- Nickel
- Nickel/cobalt
- Copper
- Stainless steel
- Aluminum
- Kovar
- Molybdenum
- Titanium
- Tantalum

## Products

### Deep Drawn Components:

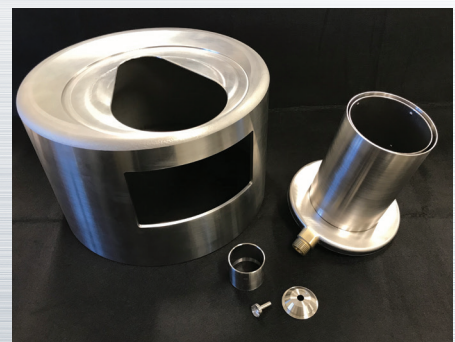
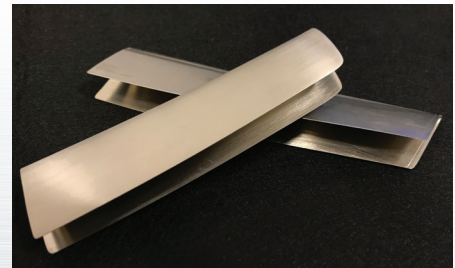
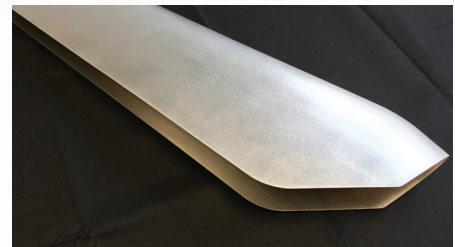
- Joint
- Anti-ice duct
- Telescopic duct
- Silencer
- Oil cooler system
- Fire suppression
- Missile body skins and nose cones

### Electroform Components:

- Leading edge abrasion guards
- Cold shields
- Heat shields
- Wing slot seals
- OG Vane leading edge abrasion guards

## Equipment & Processes:

- Deep drawing
- Electroforming
- CNC machining
- Grinding
- Polishing
- Welding
- Assembly
- 90+ forming presses
- 10 to 600 Tons
- Electroforming tanks up to 18'
- Electroforms up to 2,000 lbs.



SCAN TO  
LEARN MORE

*AlphaMetalcraft.com*

