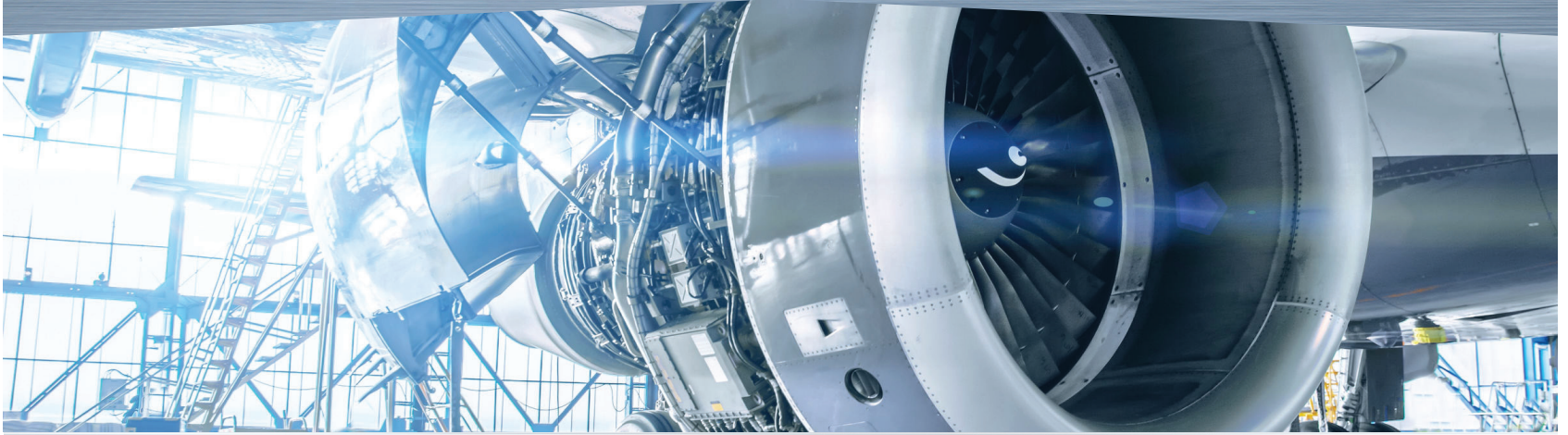


Precise. Consistent. Innovative.

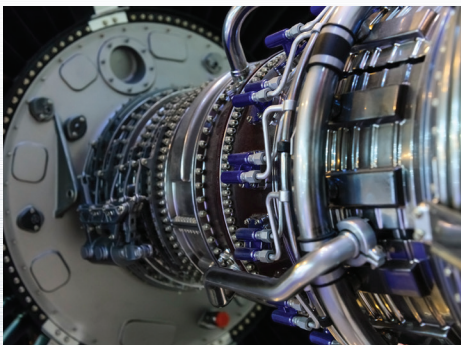


Aerospace

Rotor Blade, Engine & Exhaust Components

As a leader in **deep-drawn** and **electroformed** components and assemblies, Alpha Metalcraft Group (AMG) companies have extensive experience delivering highly precise and complex products for the aerospace, defense and medical markets.

Our customers rely on us for aerospace engine and exhaust components, rotor blade and missile components, and x-ray tube components and housing assemblies. Leveraging the expertise of Connecticut Coining, Gasser and GAR Electroforming, AMG helps customers navigate their most difficult manufacturing challenges and knows how to deliver products that meet their stringent requirements.



Turbine Engine
Ducting Components



Rotorcraft Blades
Leading Edge Abrasion Guards



Turbine Engine
Guide Vane Abrasion Guards



SCAN TO
LEARN MORE

AlphaMetalcraft.com



Aerospace Products

Certifications

- AS9100D
- ISO9001:2015
- NADCAP
- ITAR

Cage Codes

- 3EAF1
- 26014
- 29413

Materials

- Alloy 718, 625
- Hastelloy
- Nickel
- Nickel/cobalt
- Copper
- Stainless steel
- Kovar
- Titanium
- Tantalum
- Aluminum

Products

Deep Drawn Components:

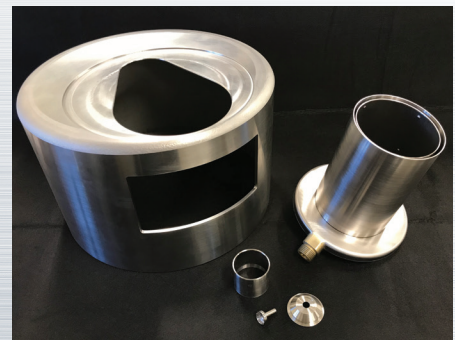
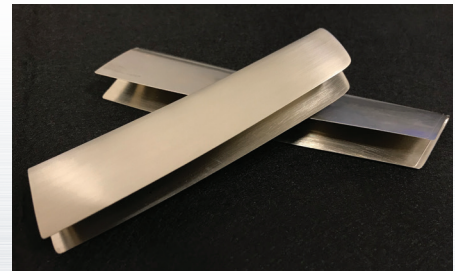
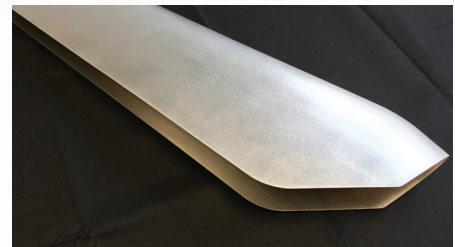
- Joint
- Anti-ice duct
- Telescopic duct
- Silencer
- Oil cooler system
- Fire suppression

Electroform Components:

- Leading edge abrasion guards
- Cold shields
- Heat shields
- Wing slot seals
- OG Vane leading edge abrasion guards

Equipment & Processes:

- Deep drawing
- Electroforming
- CNC machining
- Grinding
- Polishing
- Welding
- Assembly
- 90+ forming presses
- 10 to 600 tons
- Electroforming tanks up to 18'
- Electroforms up to 2,000 lbs.



SCAN TO
LEARN MORE

AlphaMetalcraft.com

