



Alpha Metalcraft Group

A PARTNER WITH BEST IN-CLASS ENGINEERING, TECHNOLOGY, MANUFACTURING AND VALUE-ADDED CAPABILITIES

As a leader in deep-drawn and electroformed components and assemblies, Alpha Metalcraft Group locations have extensive experience delivering highly precise and complex products for the aerospace, defense and medical and industrial markets, and we're looking to expand our team.

WHY CHOOSE US

- We have existing relationships with blue chip companies and can open the door for business with these customers.
- We are a well-capitalized company with a healthy balance sheet.
- We have a proven track record of reinvesting into businesses we acquire to expand their capacity and capabilities.
- We are consistently ranked in the top 5% of manufacturers in respective disciplines of expertise.
- Our leadership team has the manufacturing expertise, diverse market experience and business acumen to drive company growth.

ACQUISITION CONTACT

John Boscia

Vice President

Business Development

john.boscia@AlphaMetalcraft.com

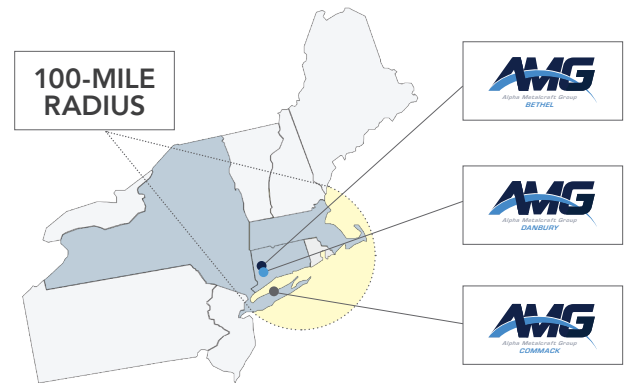
(m) 203.241.1580

See reverse side for more information >>

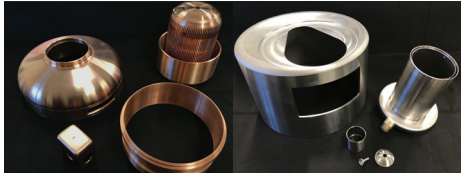
AlphaMetalcraft.com

Company Overview

- Alpha Metalcraft Group is a niche leading manufacturer of high precision products for aerospace, defense, helicopter, medical and industrial markets
- Formed through the acquisition and integration of three highly synergistic entities within a 100-mile radius
 - AMG – Bethel (aka CT Coining); Bethel, CT
 - AMG – Commack (aka Gasser); Commack, NY
 - AMG – Danbury (aka GAR Electroforming); Danbury, CT

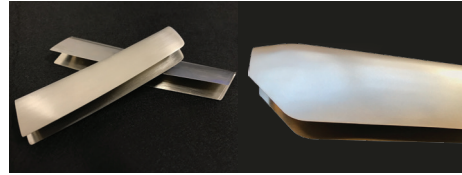


Key Capabilities



Deep Drawing

Deep Drawing is a sheet metal forming process that allows for high repeatability, low machine time and extremely tight tolerances.



Electroforming

Electroforming is an ultra-high precision process that builds product at the atom-level creating exact replications and seamless parts.



Assembly & Other Services

Complementary processes include lead lining, machining, welding, assembly, vapor degreasing and other processes.

Seeking Acquisitions

Capabilities:

- Differentiated CNC Machining
- Niche metal forming processes (deep drawing, hydroforming, spinning, roll forming, etc.)
- Preferred involvement in highly engineered processes or products
- Will also evaluate businesses that specialize in select finishing processes

Geography:

- Preference for Northeastern U.S.; secondary emphasis on the Eastern half of the U.S.

Customer Base:

- Preference for strong relationships and long-term contracts with OEM and Tier 1 aerospace and defense customers

Ownership:

- Preference for privately-owned, however will also consider private equity-backed companies and strategic divestitures

🎯 AS9100 / NADCAP Certified preferred 🎯 Approximately \$2 to \$5M EBITDA

Integration/Value Creation for Acquisitions

Cross Selling: Deliberate focus on cross-selling the overarching capabilities of each location to the combined customer base

Sales and Marketing: Positioned as a single business enterprise when introducing the platform to new customers including a new group website, as well as marketing materials and trade show representation presented as a single entity, rather than three independent entities

Material Purchasing: Commonality and transferability of materials benefit the enterprise during times of supply chain headwinds

Manufacturing/Operations: Investment into facility expansions, purchasing new equipment and capabilities including robotic assembly for select parts and software deployment across all 3 locations driving operational excellence / lean improvement

Benefits: Implemented a health insurance program across the entire organization, greatly alleviating burden from each location and offering increased savings and enhanced quality of insurance for employees

Accounting: Alpha Metalcraft Group has implemented a consolidated EPICOR ERP system across all 3 locations while the company's CFO oversees financial reporting